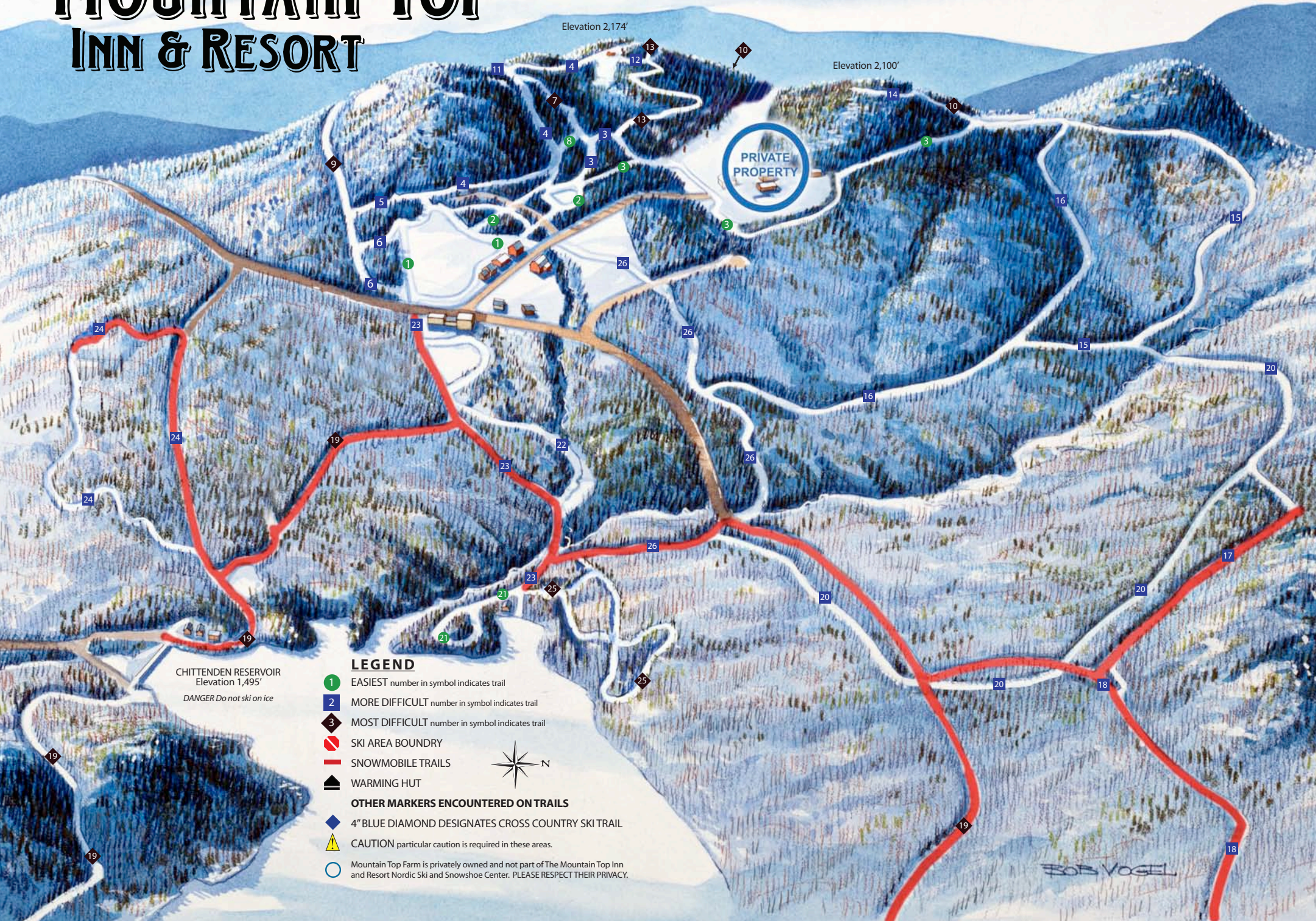


THE MOUNTAIN TOP INN & RESORT



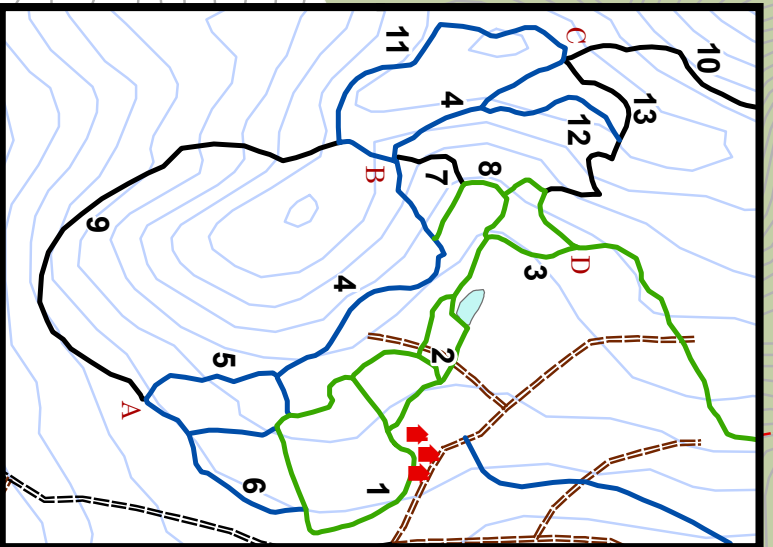
- 1 MORNING GLORY: 1 km
- 2 TURKEY TRACK: 1 km
- 3 UPPER INTERFIELD: .5 km
- 3 INTERFIELD: 2.5 km
- 4 LOGGERHEAD: 2 km
- 5 HERBIE'S RUN: .5 km
- 6 LOOPER: .5 km
- 7 BLACK OUT: .5km
- 8 MOOSE TRACK: .5 km
- 9 CHALLENGER: 1.5 km
- 10 SUNSET: 2 km
- 11 BLUE SIDEWINDER: 1 km
- 12 RYAN'S RUN: .5 km
- 13 NOSE DIVE: 1 km
- 14 ORANGE DIVE: .5 km
- 15 LOST HORIZON: 2 km
- 16 DEER RUN: 2.5 km
- 17 NEW BOSTON TRAIL: 1.5 km
- 18 GREEN BROOK TRAIL: 5 km
- 19 ROUND ROBIN: 20 km
- 20 BOONDOCKS: 4 km
- 21 SNOW GOOSE: 1 km
- 22 ZIPPER: .5 km
- 23 BOUNDER: 1.5 KM
- 24 BONNIE LASS: 1.5 km
- 25 EIGHT BALL: 1km
- 26 HEWITT BROOK RUN: 2.5 km

LEGEND

- 1 EASIEST number in symbol indicates trail
- 2 MORE DIFFICULT number in symbol indicates trail
- 3 MOST DIFFICULT number in symbol indicates trail
- SKI AREA BOUNDARY
- SNOWMOBILE TRAILS
- WARMING HUT
- OTHER MARKERS ENCOUNTERED ON TRAILS
- 4" BLUE DIAMOND DESIGNATES CROSS COUNTRY SKI TRAIL
- CAUTION particular caution is required in these areas.
- Mountain Top Farm is privately owned and not part of The Mountain Top Inn and Resort Nordic Ski and Snowshoe Center. PLEASE RESPECT THEIR PRIVACY.

CHITTENDEN RESERVOIR
Elevation 1,495'
DANGER Do not ski on ice

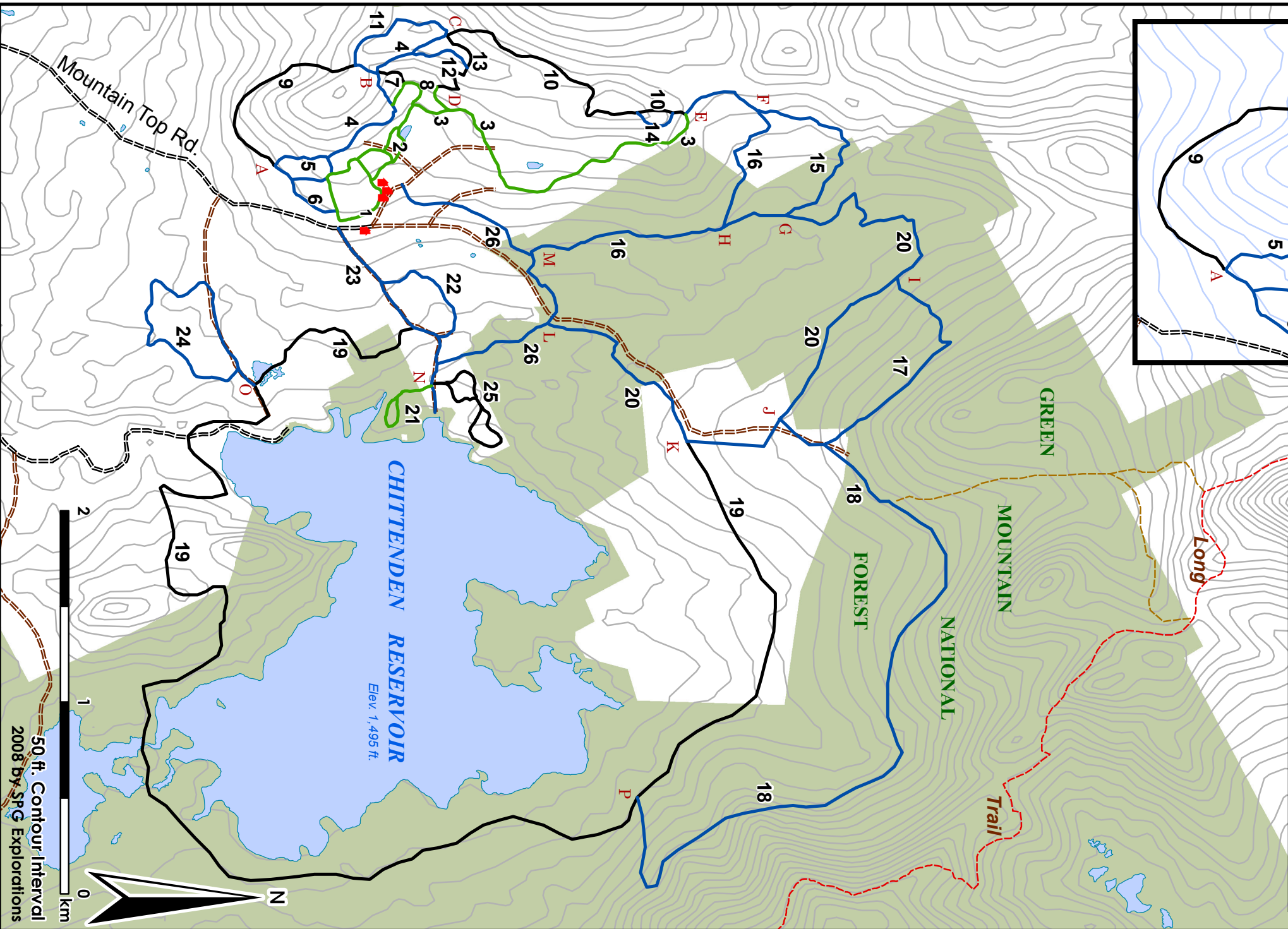
BOB VOGEL



**The Mountain Top Inn & Resort
Trail System**

- Easiest
- More Difficult
- Most Difficult
- - - Secondary Road
- = = = = Paved Road
- ▲ Mountain Top Inn and Adventure Buildings

Private Buildings and 4WD Roads are not shown
UNDER PERMIT WITH U.S. FOREST SERVICE



50 ft. Contour Interval
2008 by SPG Explorations